

LHC 40

The Leyro Portable dry block temperature calibrator suitable for temperature calibrations, between $-35^{\circ}\text{C} \dots 165^{\circ}\text{C}$ $*/-31^{\circ}\text{F} \dots 329^{\circ}\text{F}$ *, offers a versatile solution for calibrating thermocouples and RTD's in industrial environments, offering an excellent performance in stability and uniformity, as well as a fast response time. The LHC 40 is easy to use, thanks to its compact and light weight design. Thanks to the large size of the insert, it has a large multi hole capacity and can calibrate a large number of thermocouples at the same time. The diameter of the Dry Block is $\varnothing 60\text{mm}$ and 165 mm of depth



APPLICATIONS

On-site calibration
Maintenance and Service
All kind of Industrys
Machinery Construction

HIGHLIGHTS

Fast , Compact and Light
High Calibration Capacity
Insert $\varnothing 60\text{mm}$ Length 165mm
Different types of inserts
Temperature Range: $-35^{\circ}\text{C} \dots 165^{\circ}\text{C}$ *
 $-31^{\circ}\text{F} \dots 329^{\circ}\text{F}$ *
Stability: $\pm 0,03^{\circ}\text{C}$
Warranty: 3 Years



General Information

Easy and intuitive temperature controller with 4 digits and a resolution of 0,1

Integrated PT 100 probe for reference temperature measurements

Accuracy: $\pm 0,3^{\circ}\text{C}$ / $\pm 32,54^{\circ}\text{F}$

Temperature Stability: $\pm 0,03^{\circ}\text{C}$

Uniformity : $\pm 0,05^{\circ}\text{C}$



Technical Data

Large Capacity Block

Operating Temperature Range(°C)	-35...165°C* / -31...329°F*
Accuracy	± 0,3°C
Stability:	± 0,03°C
Resolution	± 0.1°C
Uniformity	± 0,05°C
Temperature Control	Internal PT100
Calibration Volume	Ø 60mm x 165 mm
Heating Time	From -5 to 100°C: 25 Minutos
Cooling Time	From 25 to -25°C 45 Minutos
Housing and assembly	Portable
Dimensions An x La x Al (cm)	280 x 280 x 400
Weight (kg)	11 kg approx.
Supply	100 ... 234 Vac 50/60 Hz
Power Consumption	Approx 310 W
Standar insert	1 x Ø 3,5 /1 x Ø 6,5/ 1 x Ø 8,5/ 1 x Ø 10,5
Optional Inserts	2 x Ø 3,5 /2x Ø 4,5/ 2 x Ø 6,5/ 2 x Ø 8,5/ 2 x Ø 10,5 3 x Ø 3,5 /3x Ø 6,5/ 3 x Ø 8,5/3 x Ø 10,5 2 x Ø 3,5 /2x Ø 4,5/2 x Ø 5,5/2 x Ø 6,5/ 1 x Ø 8,5 /2 x Ø 9,5/1 x Ø 10,5

*Minimum Temperature Range is 55 ° C / 131°F, below ambient. Absolute minimum -35°C / -31°F

Scope of delivery

Basic Instrument LHC 40

Power Cord

Standar Insert: A 1 x Ø 3,5 /1 x Ø 6,5/ 1 x Ø 8,5/ 1 x Ø 10,5

Manufacturing Traceable Calibration Certificate 5 Points

Instruction Manual

3 Years Warranty against factory defects

Optional

Trolley transport case with wheels and handle.

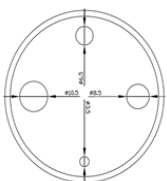
ISO 17025 Calibration Certificate (ENAC).

Optional Inserts: B: 2 x Ø 3,5 /2x Ø 4,5/ 2 x Ø 6,5/ 2 x Ø 8,5/ 2 x Ø 10,5

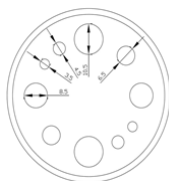
C: 3 x Ø 3,5 /3x Ø 6,5/ 3 x Ø 8,5/3 x Ø 10,5

D :2 x Ø 3,5 /2x Ø 4,5/2 x Ø 5,5/2 x Ø 6,5/ 1 x Ø 8,5 /2 x Ø 9,5/1 x Ø 10,5

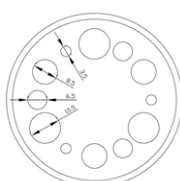
E: Blank (without holes).



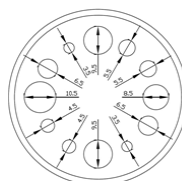
A



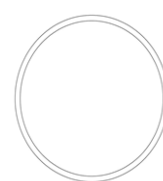
B



C



D



E